



Query Manager - List Publisher User Manual

For more information:

E: diane.mcgovern@sophtlogic.com

T: 01473 255552

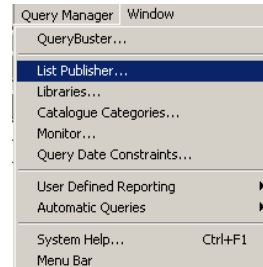
Table of Contents

<i>List Publisher</i>	3
Query Heading to Long.....	5
Withdrawal Published Query form Library	6
Inspect a Published Query	6

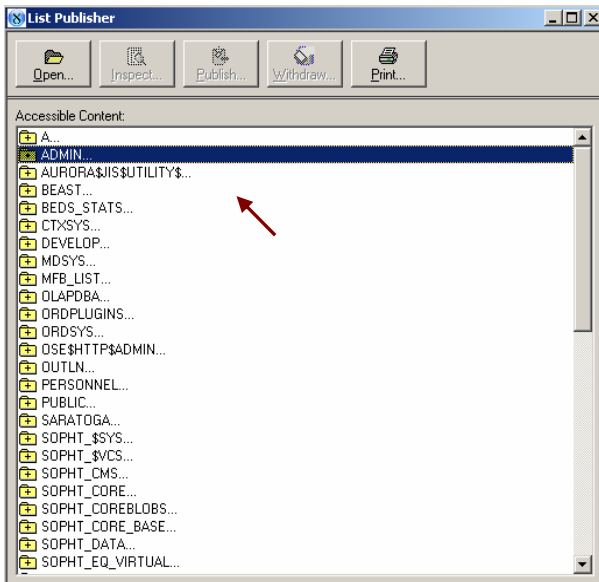
List Publisher

List Publisher allows you to publish lists, select required columns and put them in certain Libraries

- Click onto Query Manager
- Click onto List Publisher



The List Publisher window will open



The List Publisher window you will see a list of folders.

These folders relate to accounts e.g. 'Personnel' related views would be held in the 'Sopht_personnel' folder. Operational / Incident related would be held in the 'Sopht_Stats' folder.



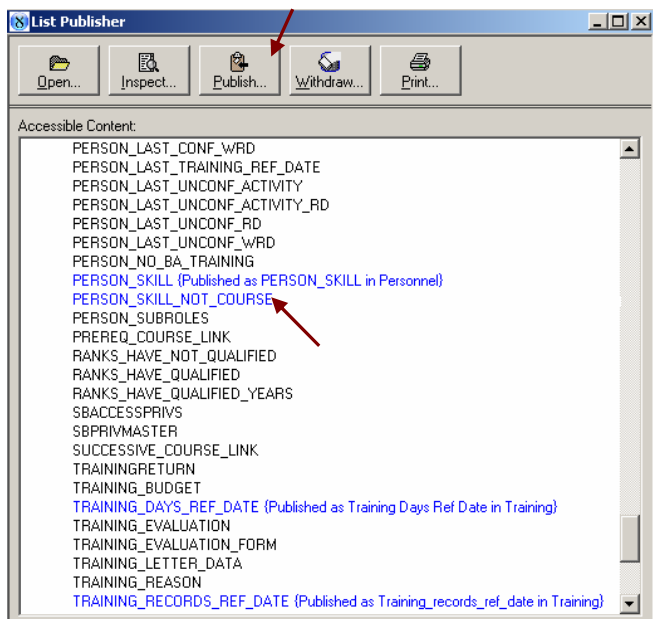
Please note account name will be preceded by the FRS abbreviated name e.g. Beds,

- Click onto one of the Folders
- Click onto the Open icon

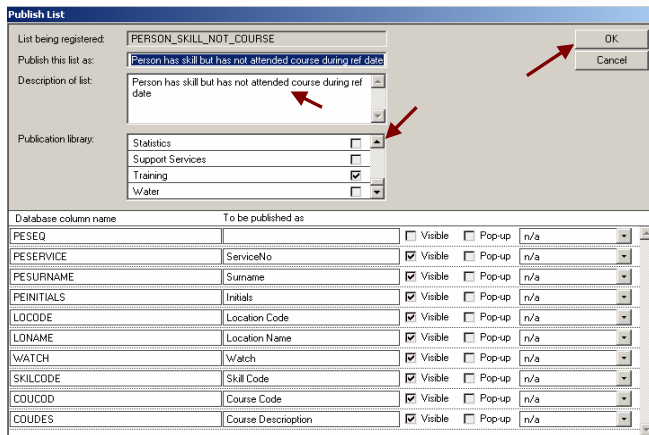


A list of unpublished pre setup lists will appear

- Click onto a Query
- Click onto the Publish icon

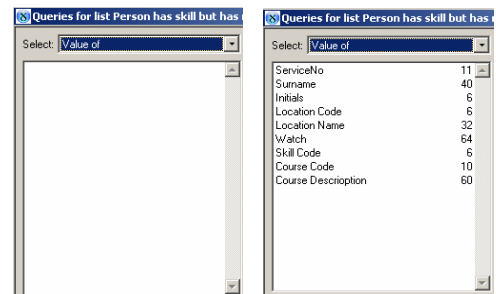


In the Publish this list as box



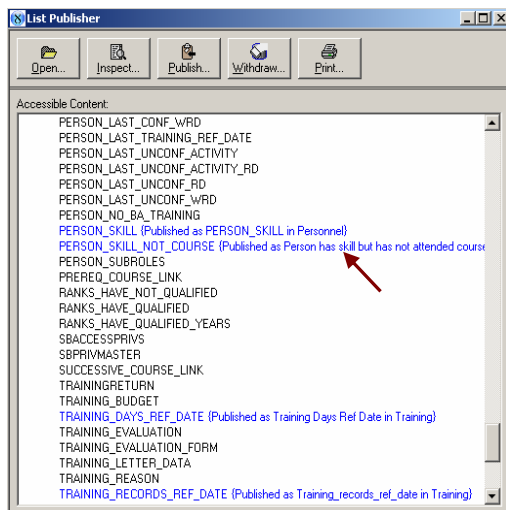
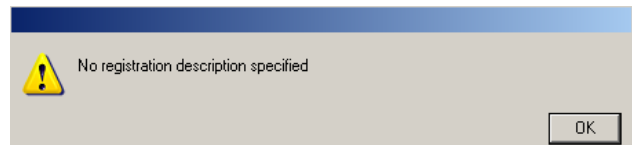
- Enter a Name of the Query
- Enter a Description of the Query
- Libraries you want this Query to appear
- To be Published As - Enter the Field Name (brief translation of the column name)
- Tick into the Visible box of the fields you want to be in the Query

If you do not tick the box the fields will not appear in the Query – as shown -

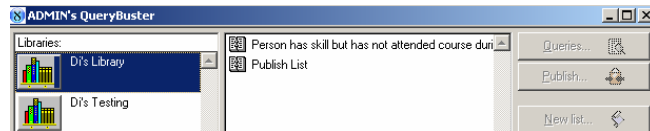


- Click onto the OK button

Other wise you may get a dialog box appear saying there is no description specified



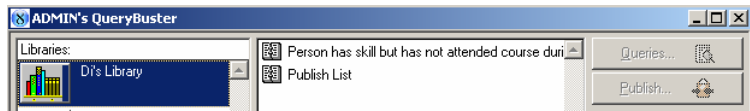
As you can see the Query has been 'Published into your Library



Query Heading to Long

If the heading; like in this case is to long

- Go to List Publisher



- Click onto the Folder the Query is in

- Click onto the Query

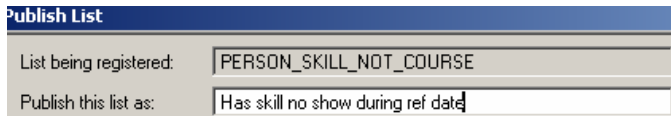


- Click onto the Publish Icon

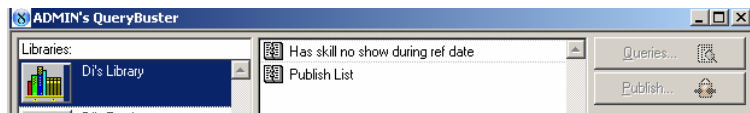


In 'Publish this list as' box

- Enter a Shorter Name
- Click onto the OK button



As you can see the Name of the Query is now shorter

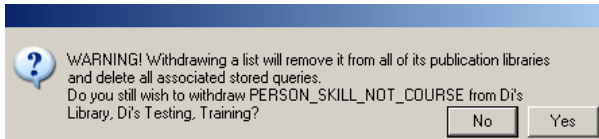
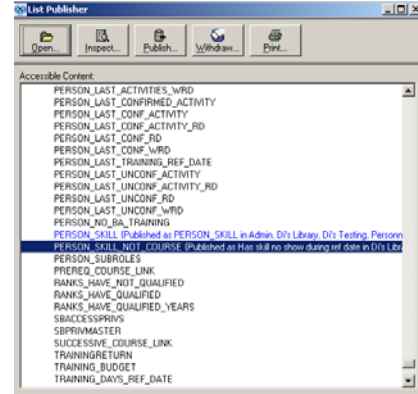


By repeating the above, you can insert as many queries; that are relevant to the Library, as you like.

Withdrawal Published Query form Library

To remove the Query from your Library

- Click onto the Query
- Click onto the Withdrawal icon



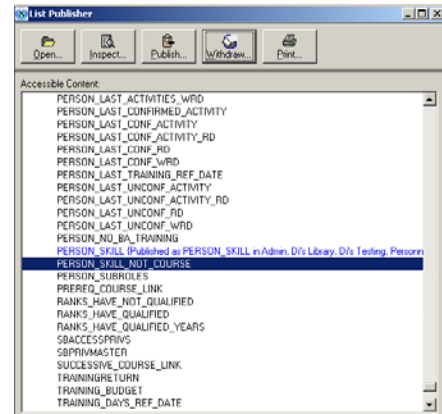
A dialog box will appear asking you if you want to remove the Query from your Library



Please note if any Saved Queries have been associated to the list being withdrawn they will be deleted.

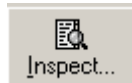
- Click onto the Yes button

As you can see the Libraries that the Query was posted to has been removed from the 'List Publisher and from the Query Buster Library.



Inspect a Published Query

- Click onto the Inspect icon



The List Inspector window will appear – this will display all columns in the list selected, there associated data type and data length.

Column name	Data type	Data length	Data scale
JCLSEQ	NUMBER	22	0
VMSEQ	NUMBER	22	0
JCLTIME	NUMBER	22	2
JOBSEQ	NUMBER	22	0
JCHSEQ	NUMBER	22	0
JCLSOURCE	VARCHAR2	50	0
JCLRATE	NUMBER	22	2
JCLCHG	NUMBER	22	2
JCLSTARTTIME	DATE	7	
JCGSEQ	NUMBER	22	0
JCLSPARE1	VARCHAR2	30	
JCLSPARE2	VARCHAR2	30	
JCLSPARE3	VARCHAR2	30	
JCHDATE	DATE	7	
JOBFINISHDATE	DATE	7	
VMCODE	VARCHAR2	8	
VMDESC	VARCHAR2	50	
JOBNUMBER	VARCHAR2	8	
JOBDESC	VARCHAR2	128	
JOBSTATUS	VARCHAR2	1	
VEHREGNO	VARCHAR2	15	
VTYCODE	VARCHAR2	10	
VSTCODE	VARCHAR2	10	
CLNO	VARCHAR2	4	